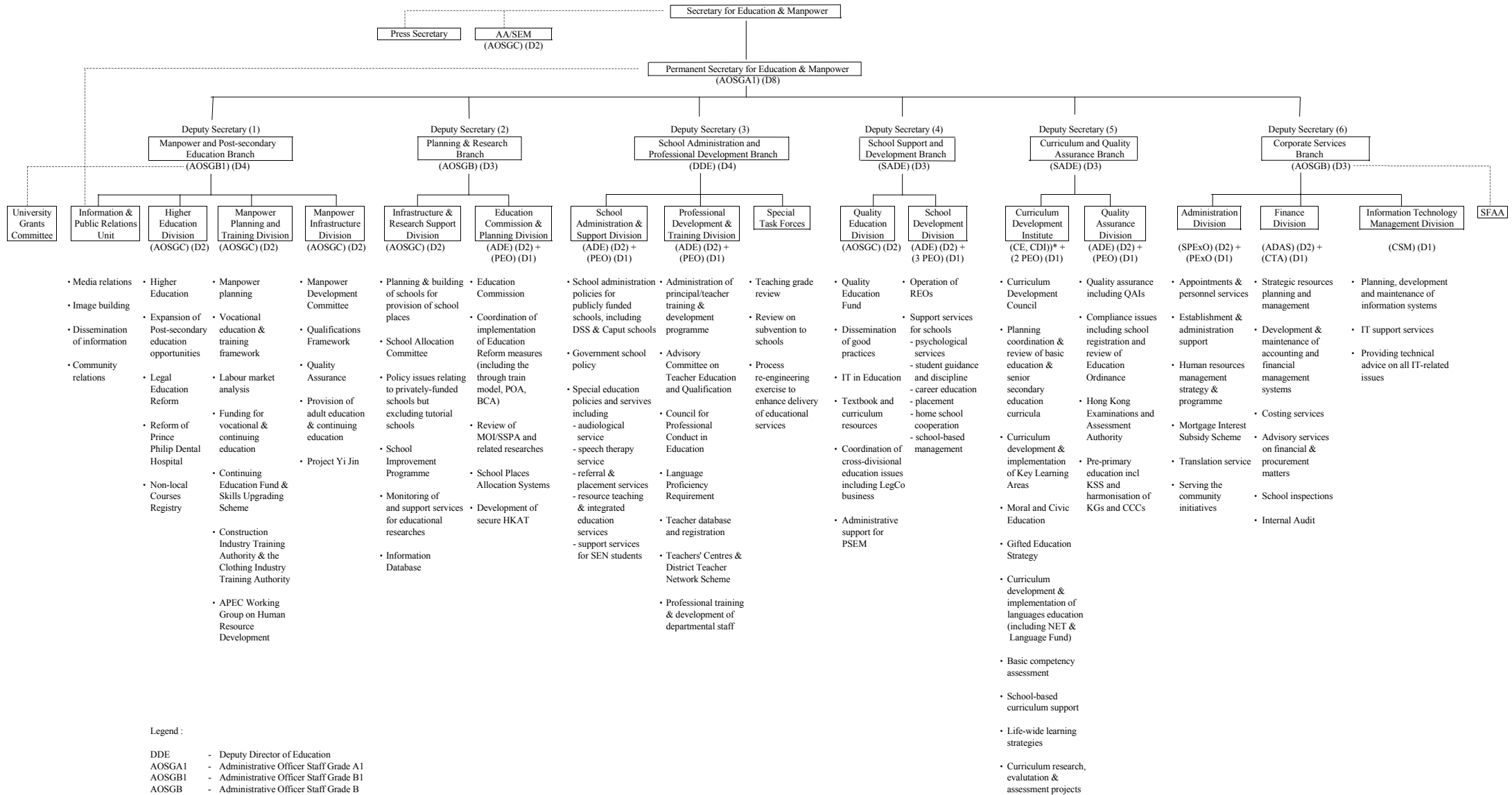


PROPOSED ORGANISATION CHART OF EDUCATION AND MANPOWER BUREAU



- Legend :
- DDE - Deputy Director of Education
  - AOSGA1 - Administrative Officer Staff Grade A1
  - AOSGB1 - Administrative Officer Staff Grade B1
  - AOSGB - Administrative Officer Staff Grade B
  - SADE - Senior Assistant Director of Education
  - AOSGC - Administrative Officer Staff Grade C
  - ADE - Assistant Director of Education
  - PEO - Principal Education Officer
  - SPExO - Senior Principal Executive Officer
  - PEXO - Principal Executive Officer
  - ADAS - Assistant Director of Accounting Services
  - CTA - Chief Treasury Accountant
  - CSM - Chief System Manager
  - SFAA - Student Financial Assistance Agency
  - \*CE, CDI - Chief Executive, Curriculum Development Institute - a NCSC post at D2 level

Total permanent directorate posts : 32